

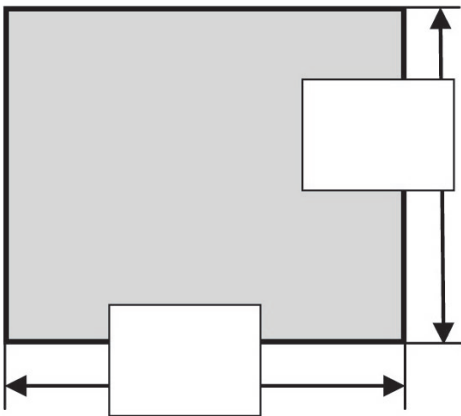


Screen Measurement Chart

1). FIREPLACE OPENING SIZE ▼

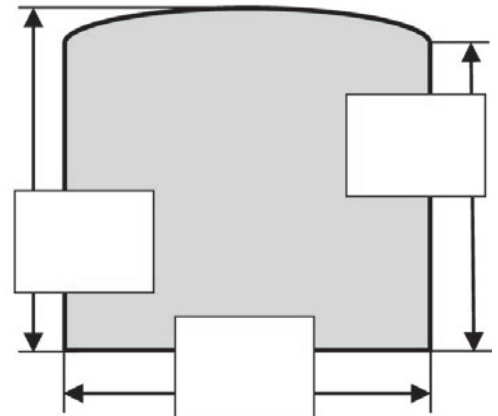
Rectangle Openings

Fill in opening measurements for Rectangle, Convex & Triple Panel Rectangle



Arch Openings

Fill in opening measurements for Arch & Triple Panel Arch



2). RECOMMENDATIONS ▼

When ordering a **Flat Rectangle, Flat Arch, or Convex Screen**, we recommend the finished size be 2" wider and 1" higher than the opening. Adjust to customer preference.

When ordering a **Triple Panel Screen**, we recommend a center panel that is 10" narrower and 1" higher than the fireplace opening. Side Panel Wings are available in 8", 10" or 12" widths; use smaller wing widths for smaller openings. Adjust to customer preference.

Each Collection has unique design features and frame specifications. You may want to adjust your Screen size accordingly.

Stoll offers two types of Screen Mesh in our freestanding screens.

Our recommended or default mesh type is a Perforated (*aka Punched*) Metal. We also offer the more traditional Wire (*aka Woven*) Mesh at the same price.

Collection	Main Frame	Frame Width
Traditional	3/16" Bar Iron	1.25"
Colonial	1.25" Square Posts	1.25"
Blacksmith	3/16" Bar Iron	2"
Forged	3/16" Forged Iron	1.25"

3). FINISHED SCREEN SIZE ▼

Rect. or Convex

Width: _____

Height: _____

Arch

Width: _____

Side Height: _____

Center Height: _____

Triple Panel Rect.

Center Width: _____

Center Height: _____

Wings: 8" 10" 12"

Triple Panel Arch

Center Width: _____

Center Height: _____

Side Height: _____

Wings: 8" 10" 12"