



Traditional & TotalView Glass Doors For Masonry Fireplaces

Operating Instructions

CAUTION: Do not light a fire until you read and understand these Operating & Installation Instructions. If you have questions, please contact your Stoll Fireplace dealer or Stoll Fireplace at (800) 421-0771 before proceeding.

GENERAL SAFEGUARDS:

- Burning trash, construction materials or scraps, pressure treated lumber, and/or railroad ties, is strongly discouraged in general, and especially with glass doors. Intense heat can cause frame damage and/or loss of temper in glass resulting in glass breakage. The fumes from burning these types of materials can also create a serious health hazard.
- Intense heat such as hot ashes, coals, or logs coming in contact with the back of the enclosure will cause tarnishing or discoloration to the door finishes. This type of abuse is not covered under warranty.
- **WARNING:** Tempered glass is breakable, just any other glass. For this reason, precautions should be taken. Tempered glass shatters into small pieces and these pieces tend to fly about the area. For this reason, you should never sit with your face or other bare skin close to the glass. In the unlikely event that the glass should break, the resulting small pieces could burn skin or melt synthetic carpets. The consumer must protect against burns by using a protective hearth rug or other suitable hearth protector in front of the fireplace.

OPERATION:

- Stoll Fireplace Glass Doors are designed to be used with the glass doors open under most circumstances when the fire is burning. Maximum radiant heat from your fuel will be realized with the doors open. **The screen must be kept closed at all times when a fire is burning except when loading or maintaining the fire.**
- Stoll Fireplace Glass Doors used in combination with Gas Logs **must have the glass doors open and the screens closed** when the gas logs are in operation to ensure adequate air flow to the gas logs. Closing the glass doors while a gas log is in operation could overheat the gas logs and damage the log set's components. Read and follow all instructions provided by the gas log manufacturer.
- **Build and maintain small to moderate fires at least 5 inches away from the back of the enclosure.** Ensure that any fireplace grate or andirons are properly sized to allow adequate clearance between the fire and the glass door enclosure. A roaring fire or a fire built too close to the glass door assembly may overheat the frame or glass, and/or damage the finish, and/or discolor the metal. Stoll Fireplace will not replace any brass or metal that has been discolored due to building a fire too hot or too near the fireplace glass door assembly.
- **Never leave the room with both the glass and screen doors open.** Upon retiring for the evening or leaving the room for an extended period the glass doors can be closed to reduce heat loss up the chimney and to insure maximum spark protection. Before closing the glass doors ensure that the fire is under control and of moderate size or smaller. Ensure that the damper built into your Stoll Fireplace Glass Door is open to allow for enough air to support combustion. Likewise, ensure that the fireplace damper is fully open. Once the fire is completely extinguished, close the fireplace damper to further minimize heat loss up the chimney.

MAINTENANCE:

- **CAUTION: Glass and Enclosure must be at room temperature before cleaning!**
- When closing the glass doors to secure a dying fire, smoke residue will accumulate on the glass. If cleaned regularly this soot can be easily removed using household glass cleaner or a mild detergent such as dish soap. Spray on, let soak for a few minutes, wipe and rinse clean.
- Heavier, long-term build up may require the use of a glass cleaner specifically formulated for removing wood smoke residue. These glass cleaners are available from your local Stoll Fireplace Dealer.
- Polished metal parts of the enclosure (brass, copper, etc.) should be cleaned only with a damp soft towel or dust cloth. These metals have a clear lacquer finish and **the use of brass or metal polish will damage the finish.**
- The enclosure and door frame metal work is finished in high quality powder coat and typically requires only an occasional wipe with a damp cloth to maintain the factory finish. A mild soap and water solution (such as dish soap) may be used if necessary.

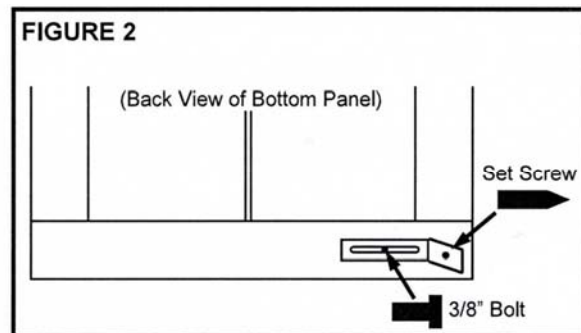
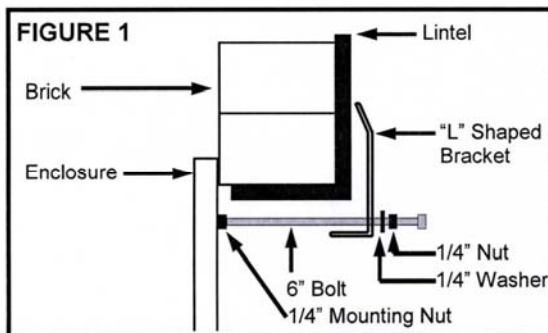
Installation Instructions

CAUTION: Be sure your Stoll Fireplace Glass Door is installed and adjusted correctly per instructions below. Misalignment of the frame can cause glass breakage, improper operation of doors, and/or the draft assembly. **If you have questions:** Please contact your Stoll Fireplace Dealer or Stoll Fireplace at (800) 421-0771 before proceeding.

INSTALLATION: Normal installation of your Stoll Fireplace enclosure is relatively easy. Professional installation by your Stoll Fireplace Glass Door dealer is recommended where unusual fireplace conditions exist or installation is beyond the homeowner's expertise.

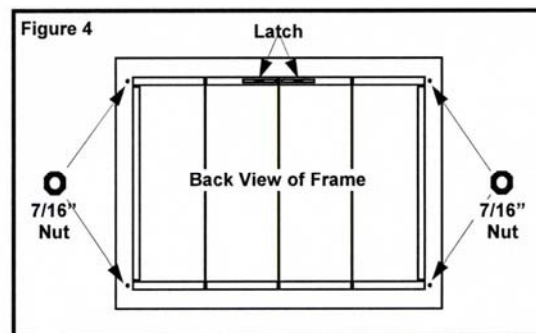
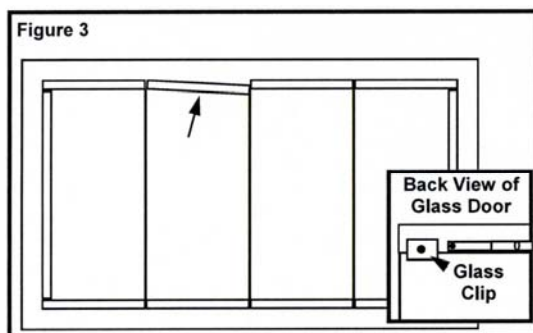
Tools Required: A flat bladed screwdriver and either a 7/16" wrench, an adjustable wrench, or a pair of pliers.

- Lift doors and screens off enclosure frame carefully to avoid damaging the finish. Set them aside.
- Thread a 1/4" nut onto each 6" bolt all the way to head of the bolt, and then slide a washer onto each bolt.
- Slide "L" shaped lintel brackets onto the 6" bolts so that the back side of "L" is against the washer. (Figure 1)
- Thread 6" bolts into nuts which are welded onto the back of the enclosure frame. (Use the top nut for maximum height or the bottom nut for minimum height.)
- Attach brackets to bottom of enclosure frame as shown in (Figure 2) with 3/8" bolts provided. Do not tighten.
- Place the fireplace door frame on the fireplace and center it on the opening.
- Slide the "L" bracket against lintel/brick and tighten 1/4" nut finger tight against "L" bracket. (Figure 1)
- With fireplace door frame centered, slide bracket against brick/stone and tighten 3/8" bolt. Replace doors carefully. Once doors are level, plumb, and aligned, tighten pointed set screws to fireplace and lintel clamp nuts.
- **NOTE:** It is critical that the door frame be plumb and not twisted. If the fireplace face is not plumb it will be necessary to adjust and/or shim the door to keep it aligned. Gaps can be filled with insulation provided.
- Alternately - The bottom brackets can be reversed and rotated to be secured to the bottom of the fireplace with screws and lead inserts (not provided.) This type of installation requires drilling the brick or mortar and is recommended to be performed by a qualified installer.



ADJUSTMENT: When making adjustments take care not to damage the door finish. Use soft surfaces.

- **Align Door Frames:** Remove glass door from enclosure frame and lay face down on a soft surface. Loosen glass clips screws. Move door frame bar back in line. Tighten glass clip screws securely. **DO NOT OVERTIGHTEN.** (Figure 3) Reinstall the door(s) onto the frame.
- **Adjust Gap Between Doors:** Remove the fireplace enclosure from fireplace. Lay enclosure face-up on a surface where the hinge nuts can be accessed (such as saw horses.) Loosen hinge nuts on back of frame just enough to allow the hinge to move. Align doors and retighten all hinge nuts securely. (Figure 4)
- **Adjust Door Latch:** Loosen handle screws. Slide latch to adjust and retighten screws. (Figure 4)
- **Adjust Latch Tension:** Adjust screw ends of ball catch latches in or out to achieve desired door latch tension.





FIVE YEAR LIMITED WARRANTY FOR TRADITIONAL & TOTALVIEW GLASS DOORS

Stoll Fireplace Equipment, Inc. warrants this product to the original retail purchaser against defects in materials and workmanship for a period of five years (glass for a period of one year) from date of the original retail purchase. Stoll Fireplace Equipment, Inc. will replace, at no charge to the original retail purchaser, any part that fails due to a defect in materials or workmanship. This warranty covers only parts and applies only to products purchased for consumer use.

This warranty does not cover damage which occurs in transit or results from alteration, accident, misuse, abuse, or improper installation. It also makes no warranty as to maximum temperature and stresses which may cause discoloration of the brass. Stoll Fireplace Equipment, Inc. shall not be liable for consequential or indirect damages which are caused by defects in it's' product, by its' repair or replacement. Some states do not allow the exclusion, limitation, incidental or consequential damages, so the exclusion or limitation in the preceding sentence may not apply to you.

If you need to take advantage of this limited warranty during the five year period, simply bring the part to your Stoll Fireplace Equipment, Inc. dealer for adjustment. Proof of the original purchase date will be required in order for you to take advantage of the limited warranty.

The implied warranties of merchantability and fitness for a particular purpose which may arise under state law are also limited in duration to five years from the original purchase of this product. Some states do not allow limitations on how long and implied warranty lasts, so this limitation may not apply to you.

If you have questions or problems with your five year warranty on this product write to:
Stoll Fireplace Equipment, Inc. – 153 Hwy 201 - Abbeville, SC 29620.

When ordering replacement parts, always provide height, width, and model number.

THANK YOU FOR CHOOSING A STOLL PRODUCT!

- Stoll Fireplace Equipment, Inc. was established in 1970 by Mr. William Stoll Sr. His Christian values continue to be the guiding principles of the company's ethical standards, customer satisfaction, and product quality.
- Our goal at Stoll Fireplace:
 - To honor God with our business.
 - To treat others as we would like to be treated.
 - To have those we do business with become our friends.
- We will do our best to give you a quality product.
- Honesty is not a question mark, and to correct mistakes is an opportunity to show integrity.
- A satisfied customer is our pledge to you.

FOR GOD SO LOVED THE WORLD, THAT HE GAVE HIS ONLY BEGOTTEN SON, THAT WHOSOEVER BELIEVETH IN HIM, SHOULD NOT PERISH BUT HAVE EVERLASTING LIFE. - JOHN 3:16