

Philadelphia Premium

Screen Assembly Instruction Sheet

Screen Assembly:

1. Attach curtain rod bracket to back of door frame with bolt & nut. (See Diagram #2)
2. Thread curtain rings of one screen onto each rod, leaving one ring off on opposite side of hand pull.
3. Slide end of rod without pull through hole in bracket on side of frame. **Thread loose curtain ring onto rod on the outside of bracket!**
4. Push one cap ring onto end of rod behind last curtain ring. **Caution! Do not push on more than 1/8". Cap rings are not removable!**
5. Slide free end of rod into prev. attached bracket in center of door, using the hole furthest away. (See diagram #2)
6. Push one cap ring onto end of rod, following the prev. mentioned instructions.
7. Repeat steps 1-6 on opposite side.

Diagram #1

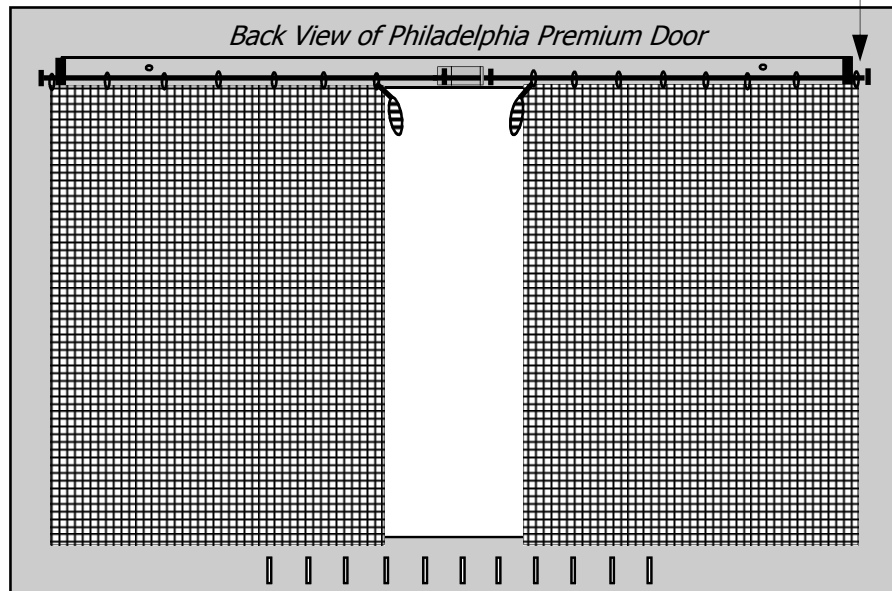
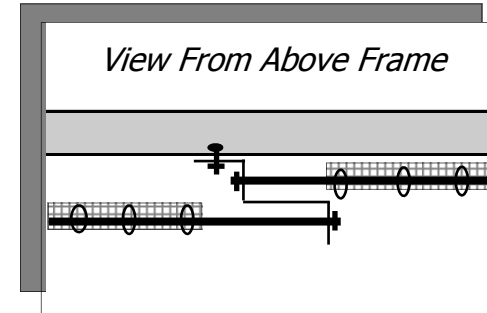


Diagram #2



Parts Descriptions:

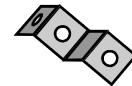
The curtain rod and related hardware are located in a separate box to avoid damage during shipping.

The box should hold:

2- Steel Rods



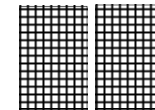
1- Curtain Rod Bracket with drilled holes



1- 1/4" Bolt w/ Nut



2- Pc. Mesh Screen



4- Cap Rings

